

# EnRevv Capsules

Stress and fatigue reducer

An anti-fatigue nutraceutical capsule made up of Cinnamon, Shatavari, Rosemary amongst others which is designed to decrease stress and fatigue, improve brain function. It also enhances the physical ability of the body.



## KEY INGREDIENTS

<i>Camellia sinensis</i>	Shows antioxidant and neuroprotective properties.
<i>Ocimum sanctum</i>	Helps in decreasing stress, exhaustion, and fatigue.
<i>Caffeine</i>	Acts as a psychostimulant.
<i>Cinnamomum zeylanicum</i>	Relaxes the body.
<i>Panax ginseng</i>	Boosts energy, reduces stress and promotes relaxation of the mind.
<i>Rosmarinus officinalis</i>	Aids in reducing fatigue symptoms.
<i>Glycyrrhiza glabra</i>	Reduces cortisol stress hormone exerting anti-fatigue effects.
<i>Zingiber officinale</i>	Relieves nausea, soothes cramps and improves circulation.
<i>Asparagus densiflorus</i>	Contributes in relieving fatigue signs.
<i>Ginkgo biloba</i>	Helps to achieve better mental and physical health by reducing anxiety and improving focus.

## Direction of use

Take 1 capsule twice a day.  
Each capsule to be taken along with water.

Neuronal damage results in oxidative injury of neurons resulting in memory loss and cognitive functions. Cytoprotective effect against neuronal damage ensures neuronal health and anti-stress properties. Protection of DNA against oxidative stress reflects the anti-fatigue potential. Adenosine triphosphate (ATP) is known as the energy currency for cells in the body. Increase in ATP levels in muscle cells result in boosting energy and improved physical performance.

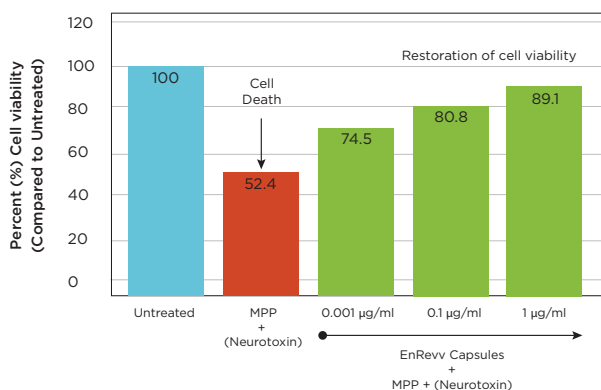
## EFFICACY CLAIMS

Maintains neuronal health

Energy booster

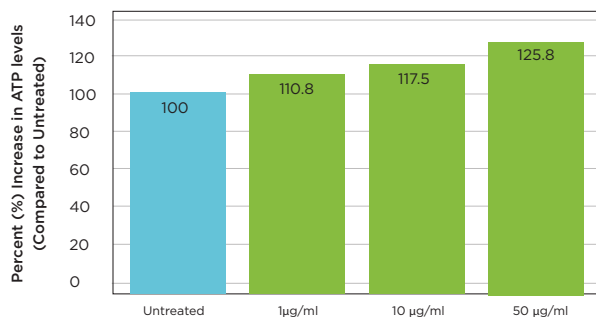
Fights fatigue

Measurement of Neuro protection by restoration of cell viability



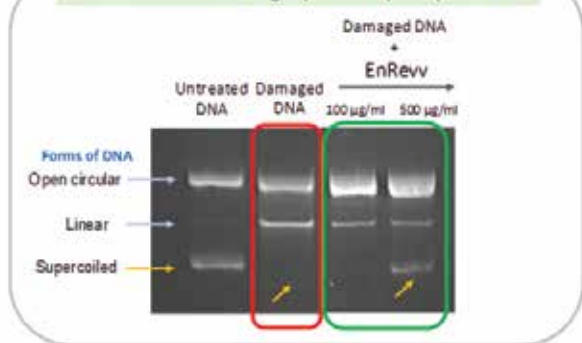
Results obtained in vitro. Data demonstrates % Cell viability compared to Untreated group normalised to 100%.

Measurement of Energy boosting potential by increase in ATP synthesis



Results obtained in vitro. Data demonstrates % Increase compared to Untreated group normalised to 100%.

Measurement of anti-fatigue potential by DNA protection



Results obtained in vitro. Image demonstrates the DNA bands in agarose gel. Oxidative stress using UVB+H<sub>2</sub>O<sub>2</sub> resulted in damage of supercoiled form of DNA. EnRevv Capsule treated groups show restoration of supercoiled DNA.

## RESULTS

- 🌿 EnRevv Capsule helps in restoration of cell health against damage in neuronal cells (SHSY-5Y) by a maximum of 36.7% as compared to damaged group.
- 🌿 EnRevv Capsule stimulates ATP levels in osteoblasts (MG-63) by a maximum of 25.8% as compared to untreated group.
- 🌿 EnRevv Capsule exhibited DNA protection ability against oxidative stress.
- 🌿 EnRevv Capsule also showed antioxidant activity by free radical scavenging in DPPH assay with an IC<sub>50</sub> of 4.56 µg/ml.

These results substantiate the neuronal health promoting, energy boosting properties of EnRevv.